



## I NEED TO KNOW

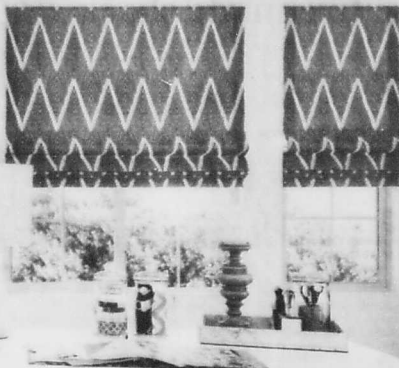
Are home prices going to keep coming down?

**VISIT ADDRESSUTAH.COM  
TO GET REAL ANSWERS**



**3DAYBLINDS®**  
YOU'LL LOVE THE TREATMENT

CUSTOM BLINDS, SHADES, SHUTTERS & DRAPERY



**BUY ONE  
GET ONE 50% OFF**  
on Custom Blinds, Shades & Drapery

**CALL TO SCHEDULE**

**FREE in-home design consultation  
with no obligation!**

**877-760-2030**



**WE DESIGN, WE MEASURE, WE INSTALL, YOU RELAX!®**

\*Offer valid on 3 Day Blinds brand products only, excluding shutters and special orders. Buy 1 qualifying window covering and receive the 2nd qualifying window covering of equal or lesser value at 50% off. Offer excludes installations, sales tax, shipping and handling. Not valid on previous purchases or with any other offer or discount. **Offer Code 8038 Expires 5/31/24.** 3 Day Blinds, Inc. and Home Improvement, Louisville, Kentucky 40205. California 1902996, Connecticut INC-044950, New Jersey 19A0698000, Oregon 20988, Pennsylvania 0407010, Tennessee 19022, Washington 12A19888423, County License, Nevada, County, NV #0070000, Rockland County, NY #048734-00-00, Licensed through: Great Windows Services, LLC, Virginia 270372678, West Virginia 19V05028, Various City Licenses. Availability upon Request. © 2024 3 Day Blinds, LLC.

## Utah's Luxury Listings: Presented by The Secrist Team

2023 #1 SELLING TEAM | SERVING CLIENTS FROM SALT LAKE TO ST. GEORGE



**2222 E Walker Lane, Holladay**

9 BD | 10 BA | 9,275 SF | 1 AC | \$7,495,000

Introducing the pinnacle of contemporary luxury in the affluent Salt Lake City corridor, a never-lived-in 9,275 square foot mansion on a full acre of opulence. Featuring nine bedroom suites, each with arresting views and walk-in closets, along with a total of 10 baths, this estate is tailored for the elite.



**3162 E Eagle View, Sandy**

8 BD | 12 BA | 16,150 SF | \$5,990,000

Discover an unparalleled mountain retreat in Sandy. This expansive 16,150 square foot estate luxuriously spreads over 2.42 acres, offering seven bedrooms, 12 bathrooms, and a bevy of exquisite amenities.



**NEW LISTING**

**8178 Newbury Grove Ln, Cottonwood Hts**

5 BD | 5 BA | 5,216 SF | \$1,749,000

Exquisite near-new Craftsman style home, upgraded for quality with all main floor living.



**NEW PRICE**

**587 E Mash Farm Circle, Murray**

4 BD | 5 BA | 5,308 SF | \$1,569,000

Exquisite (new build) custom home, boasting unspoiled mountain vistas.



**NEW LISTING**

**7258 W Summit Top Lane, Herriman**

4 BD | 3 BA | 4,137 SF | \$1,199,999

Embrace modern sophistication on 0.24 acres of serenity.



**NEW LISTING**

**850 S Donner Way #102, Salt Lake City**

4 BD | 3 BA | 2,505 SF | \$999,995

Enjoy glorious sunsets and sparkling city lights from this stunning condo.

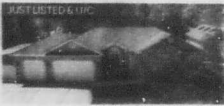


**NEW LISTING**

**1892 E Ashley Mesa Lane, Sandy**

5 BD | 4 BA | 3,240 SF | 0.22 AC | \$875,000

Immaculate two-story in a quiet and highly desirable Sandy neighborhood.



**JUST LISTED & LHC**

**9118 S Meadow Lily Lane, West Jordan**

5 BD | 3 BA | 2,981 SF | 0.33 AC | \$799,000

Welcome home to suburban living in this immaculate West Jordan Rambler.



**TOWNHOMES SELLING FAST!**

**915 93 W Ryker Ln (Units 7, 8), Midvale**

3 BD | 3 BA | 1,684 SF | \$474,900 & \$479,900

New C-Street townhome boasts premium architectural elements in a great location.



**NEW PRICE**

**1789 Wide River Drive, St. George**

2 BD | 2 BA | 1,190 SF | 0.06 AC | \$345,000

Escape to St. George with this incredibly clean and charming Sun River 55+ community home.



**BERKSHIRE  
HATHAWAY  
HOMESERVICES**

**UTAH  
PROPERTIES**

**THE  
SECRIST TEAM**

Linda (801) 455-9999 • Brett (801) 201-6435 • Lisa (801) 455-9900 | @THESECRISTTEAM • LINDASECRIST.COM

**POOR**